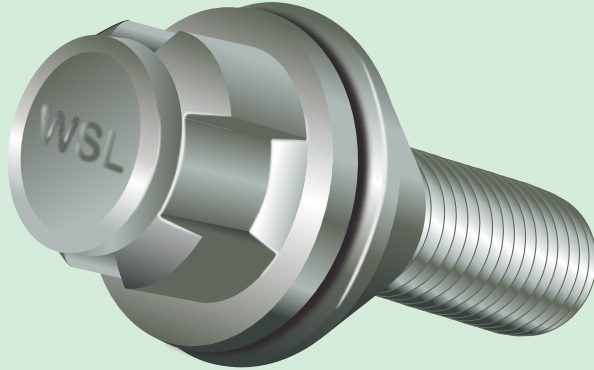




**Mobile Caravan
Engineers Association**



WSL Caravan Wheel Safety Bolt



The WSL Caravan Wheel Safety Bolt is the first bespoke wheel bolt designed for the caravan industry. It represents a huge leap forward in technical development on a component that has stood still for decades.

Features:

- Bespoke floating collar – specifically designed for the caravan industry
- Security/locking wheel bolt head
- High performance anti-friction and anti-corrosion 2-part surface finish

Benefits:

- Huge increase in clamping force
- Increase in bolt elongation (minimum 3.25 times)
- Increase in grip length (2.4 times)
- Helps prevent wheel theft
- Helps prevent bolt loosening and wheel detachment
- Corrosion resistance to 840 hours salt spray

WSL

CARAVAN WHEEL SAFETY BOLT

SPECIALISTS IN CARAVAN WHEEL SAFETY

www.mcea.co.uk
services@mcea.co.uk



**Mobile Caravan
Engineers Association**



WSL Caravan Wheel Safety Kit



Wheel Solutions Limited has researched and identified that wheel and tyre related issues are in the top five insurance claims for Tourer Caravans.

In response, Wheel Solutions Limited has developed The “WSL Caravan Wheel Safety Kit” to help prevent:

- Wheel detachments
- Tyre blowout
- Tyre failure
- Wheel bolt loosening
- Wheel Theft

The WSL Caravan Wheel Safety Kit includes:

1) WSL Caravan Wheel Safety Bolts:

The first bespoke wheel bolt designed for the caravan industry.

2) WSL Torque Wrench:

To deliver a precise torque with a safe and secure clamping force.

3) WSL Tyre Pressure Gauge:

To ensure the correct tyre inflation

pressure whilst ensuring caravan safety, stability, optimised fuel economy and improved tyre life.

4) WSL and TyreSafe Leaflet:

To provide reference and information on how to maintain tyre safety.



www.mcea.co.uk
services@mcea.co.uk